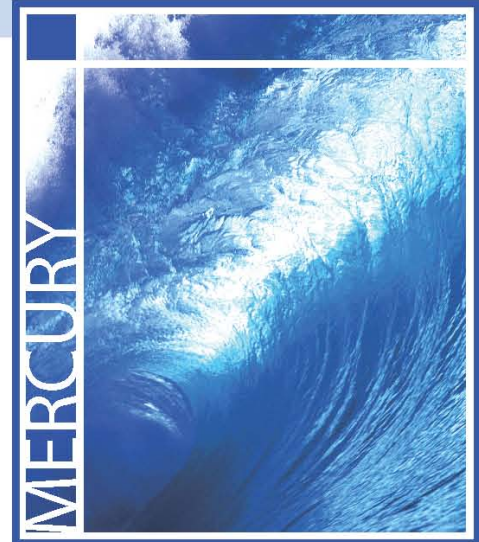


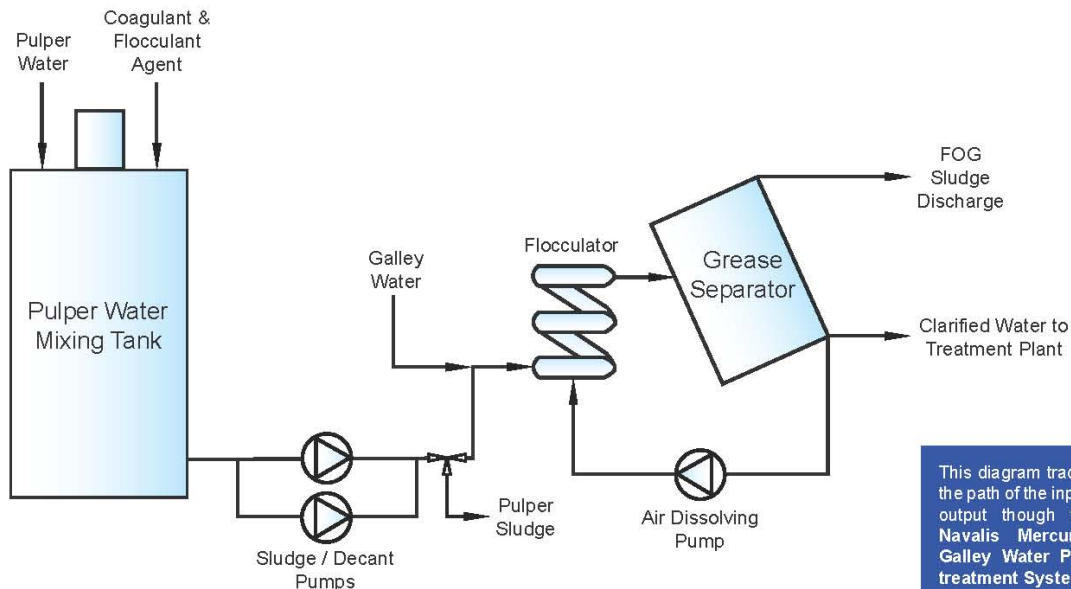


Navalis Galley Water Pretreatment System

The elegantly simple **Navalis Mercury™ Galley Water Pretreatment System** removes 95% of the fats, oils, greases (FOG) and solids from galley and pulper water wastestreams. Untreated, these wastestreams are high in FOG, Chemical Oxygen Demand (COD), Total Suspended Solids (TSS) and Biochemical Oxygen Demand (BOD₅). This patent pending system from **Navalis Environmental Systems®** enables these otherwise difficult to treat wastestreams, to be easily handled in any treatment system. Current grease “traps” are only marginally effective leading to treatment system “upset” and fouling of internal parts. **The Navalis Mercury™ Galley Water Pretreatment System** provides an affordable low maintenance solution to this very difficult treatment problem. Addition of this system will significantly enhance total system operation.



- Simplicity of Design
- Fit in Existing Footprint
- Enhanced Overall System Performance
- 95% Removal of FOG and Solids
- FOG and Pulper Solids directed to Sludge Management System
- No Operator Intervention for Grease or Solids Removal



This diagram traces the path of the input/output through the Navalis Mercury™ Galley Water Pretreatment System*

Authorised Distributor:-

Australian Water Recycling Institute
 1/30 Chelmsford Street,
 Williamstown VIC 3016

Ph:- 0423 050 887
 Email:- info@waterrecyclinginstitute.com.au
www.waterrecyclinginstitute.com.au

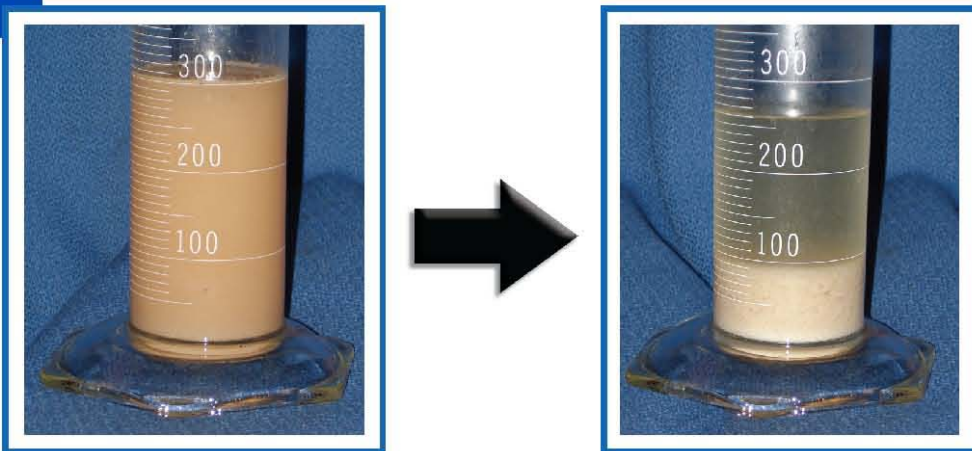
© Australian Water Recycling Institute 2010



The Naval Mercury™ Galley Water Management System

- Innovation in design – elegantly simple
- Modular in design
- All Stainless Steel 316L construction
- Affordable upgrade to existing systems
- Fully automated operation

This diagram traces the path of the input/output through the Naval Mercury™ Galley Water Pre-treatment System*



Characteristic System Parameters

Capacity (People)	Pulper Water Module			Galley Water Grease Separator		
	Footprint	Wet Weight	Power (kW)	Footprint	Wet Weight	Power (kW)
1,500	46 ft ² (4.3 m ²)	8,910 lbs (4,040 kg)	12.9	46 ft ² (4.3 m ²)	8,910 lbs (4,040 kg)	12.9
2,500	46 ft ² (4.3 m ²)	8,910 lbs (4,040 kg)	12.9	46 ft ² (4.3 m ²)	8,910 lbs (4,040 kg)	12.9
3,500	46 ft ² (4.3 m ²)	8,910 lbs (4,040 kg)	12.9	46 ft ² (4.3 m ²)	8,910 lbs (4,040 kg)	12.9
4,500	46 ft ² (4.3 m ²)	8,910 lbs (4,040 kg)	12.9	46 ft ² (4.3 m ²)	8,910 lbs (4,040 kg)	12.9
5,500	46 ft ² (4.3 m ²)	8,910 lbs (4,040 kg)	12.9	46 ft ² (4.3 m ²)	8,910 lbs (4,040 kg)	12.9
6,500	46 ft ² (4.3 m ²)	8,910 lbs (4,040 kg)	12.9	46 ft ² (4.3 m ²)	8,910 lbs (4,040 kg)	12.9

Authorised Distributor:-

Australian Water Recycling Institute

1/30 Chelmsford Street,
Williamstown VIC 3016

Ph:- 0423 050 887

Email:- info@waterrecyclinginstitute.com.au

www.waterrecyclinginstitute.com.au

© Australian Water Recycling Institute 2010

